

VIGOUR™



**Medical regulators
Medical flowmeters
Medical gas outlets
Medical gas adapters**

The image features a central text element surrounded by a dynamic, abstract graphic. The graphic consists of numerous thin, curved lines in shades of teal, light blue, and reddish-pink. These lines originate from a central point just above the text and fan outwards, creating a sense of movement and energy. The lines are of varying lengths and curves, some extending towards the top corners and others towards the bottom corners. The overall composition is clean and modern, with a white background that emphasizes the vibrant colors and fluid lines.

VIGOUR

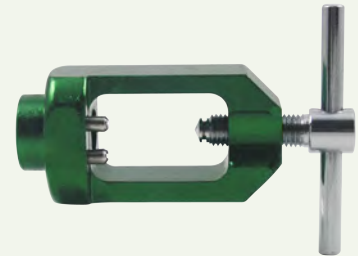
Contents

<i>VMR-1 Series regulators</i>	-----	1
<i>VMR-2 Series regulators</i>	-----	3
<i>VMR-3 Series regulators</i>	-----	5
<i>VMRA Series regulators</i>	-----	7
<i>VFC Series medical flowmeters</i>	-----	8
<i>VFC2 Series medical flowmeters</i>	-----	9
<i>T M1 Series medical flowmeters</i>	-----	10
<i>TM2 Series medical flowmeters</i>	-----	11
<i>TM3 Series medical flowmeters</i>	-----	12
<i>TM4 Series medical flowmeters</i>	-----	13
<i>TM5 Series medical flowmeters</i>	-----	14
<i>TM6 Series medical flowmeters</i>	-----	15
<i>VSO Series gas outlets</i>	-----	16
<i>Humidifiers</i>	-----	17
<i>Medicl Gas Adapters Series</i>	-----	18



VMR-1 SERIES

Single stage / diaphragm type / Flow meter regulators



CGA-870

1

PRODUCT FEATURES:

- Maximum inlet pressure 3000psi.
- Chromed plated brass body with all brass high pressure chamber for durability & safety. Chromed Forged brass flow meter body for durability.
- Neoprene diaphragm type.
- Reliable external safety relief valve.
- Sintered filter inlet for additional safety and longer life.
- Various gauge plate design: 2" diameter Inlet pressure gauges 0~4000psi.
- Polycarbonate inner and outer tubes provide greater accuracy, durability & safety.
- Outlet flow control valve 90° or 180° are available. (90° standard)
- The standard preset outlet pressure is 50psi for stabilizing and accuracy flowing.
- International standard Inlet and outlet thread sizes are available.

HOW TO ORDER:

VMR-1 - 15L - 540

Flow rate specification
in “liter/minute”

Inlet Connection:

CGA540, CGA540HT, CGA870, CGA992, CGA992HT, CGA346, CGA950, CGA320, CGA320HT and CGA940,

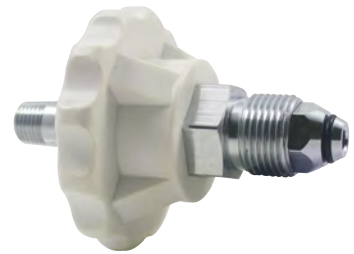
HOW TO ORDER:

Model	Gas	Flow Range (LPM)	Inlet Connection
VMR-1-5L-540	OXYGEN	1/2~5	CGA-540 Nut and Nipple
VMR-1-5L-540HT	OXYGEN	1/2~5	CGA-540 Handtight Nut and Nipple
VMR-1-5L-870	OXYGEN	1/2~5	CGA-870 Yoke
VMR-1-8L-540	OXYGEN	1/2~8	CGA-540 Nut and Nipple
VMR-1-8L-540HT	OXYGEN	1/2~8	CGA-540 Handtight Nut and Nipple
VMR-1-8L-870	OXYGEN	1/2~8	CGA-870 Yoke
VMR-1-15L-992	OXYGEN	1~15	CGA-992 Nut and Nipple
VMR-1-15L-992HT	OXYGEN	1~15	CGA-992 Bull Nose and Handtight
VMR-1-15L-540	OXYGEN	1~15	CGA-540 Nut and Nipple
VMR-1-15L-540HT	OXYGEN	1~15	CGA-540 Handtight Nut and Nipple
VMR-1-15L-870	OXYGEN	1~15	CGA-870 Yoke
VMR-1-15L-346	MEDICAL AIR	1~15	CGA-346 Nut and Nipple
VMR-1-15L-346HT	MEDICAL AIR	1~15	CGA-346 Handtight Nut and Nipple
VMR-1-15L-950	MEDICAL AIR	1~15	CGA-950 Yoke
VMR-1-15L-320	CO2	1/2~15	CGA-320 Nut and Nipple
VMR-1-15L-320HT	CO2	1/2~15	CGA-320 Handtight Nut and Nipple
VMR-1-15L-940	CO2	1/2~15	CGA-940 Yoke

* Other configuration, consult factory.

VMR-2 SERIES

Single stage / piston type / Flow meter regulators



CGA-992HT

3

PRODUCT FEATURES:

- Maximum inlet pressure 3000psi.
- Chromed plated brass body with all brass high pressure chamber for durability & safety. Chromed Forged brass flow meter body for durability.
- Neoprene diaphragm type.
- Reliable external safety relief valve.
- Sintered filter inlet for additional safety and longer life.
- Various gauge plate design: 2" diameter Inlet pressure gauges 0~4000psi.
- Polycarbonate inner and outer tubes provide greater accuracy, durability & safety.
- Outlet flow control valve 90° or 180° are available. (90° standard)
- The standard preset outlet pressure is 50psi for stabilizing and accuracy flowing.
- International standard Inlet and outlet thread sizes are available.

HOW TO ORDER:

VMR - 2 - 15L - 870

Inlet Connection:

CGA540, CGA540HT, CGA870, CGA992, CGA992HT, CGA346, CGA950, CGA320, CGA320HT and CGA940,

Flow rate specification in "liter/minute"

HOW TO ORDER:

Model	Gas	Flow Range (LPM)	Inlet Connection
VMR-2-5L-540	OXYGEN	1/2~5	CGA-540 Nut and Nipple
VMR-2-5L-540HT	OXYGEN	1/2~5	CGA-540 Handtight Nut and Nipple
VMR-2-5L-870	OXYGEN	1/2~5	CGA-870 Yoke
VMR-2-8L-540	OXYGEN	1/2~8	CGA-540 Nut and Nipple
VMR-2-8L-540HT	OXYGEN	1/2~8	CGA-540 Handtight Nut and Nipple
VMR-2-8L-870	OXYGEN	1/2~8	CGA-870 Yoke
VMR-2-15L-992	OXYGEN	1~15	CGA-992 Nut and Nipple
VMR-2-15L-992HT	OXYGEN	1~15	CGA-992 Bull Nose and Handtight
VMR-2-15L-540	OXYGEN	1~15	CGA-540 Nut and Nipple
VMR-2-15L-540HT	OXYGEN	1~15	CGA-540 Handtight Nut and Nipple
VMR-2-15L-870	OXYGEN	1~15	CGA-870 Yoke
VMR-2-15L-346	MEDICAL AIR	1~15	CGA-346 Nut and Nipple
VMR-2-15L-346HT	MEDICAL AIR	1~15	CGA-346 Handtight Nut and Nipple
VMR-2-15L-950	MEDICAL AIR	1~15	CGA-950 Yoke
VMR-2-15L-320	CO2	1/2~15	CGA-320 Nut and Nipple
VMR-2-15L-320HT	CO2	1/2~15	CGA-320 Handtight Nut and Nipple
VMR-2-15L-940	CO2	1/2~15	CGA-940 Yoke

* Other configuration, consult factory.

VMR-3 SERIES

Single stage / piston type / Flow meter regulators



5

PRODUCT FEATURES:

- Maximum inlet pressure 300 Bar.
- Chromed plated brass body with all brass high pressure chamber for durability & safety.
- Piston type.
- Reliable external safety relief valve.
- Sintered filter inlet for additional safety and longer life.
- 1.5" diameter Inlet pressure gauges 0~315 Bar.
- Polycarbonate inner and outer tubes provide greater accuracy, durability & safety.
- The standard preset outlet pressure is 50psi for stabilizing and accuracy flowing.
- International standard Inlet and outlet thread sizes are available.

HOW TO ORDER:

VMR - 3 - 15L - 870

Flow rate specification in "liter/minute"

Inlet Connection:

CGA540, CGA540HT, CGA870, CGA992, CGA992HT, CGA346, CGA950, CGA320, CGA320HT and CGA940,

HOW TO ORDER:

Model	Gas	Flow Range (LPM)	Inlet Connection
VMR-3-5L-540	OXYGEN	1/2~5	CGA-540 Nut and Nipple
VMR-3-5L-540HT	OXYGEN	1/2~5	CGA-540 Handtight Nut and Nipple
VMR-3-5L-870	OXYGEN	1/2~5	CGA-870 Yoke
VMR-3-8L-540	OXYGEN	1/2~8	CGA-540 Nut and Nipple
VMR-3-8L-540HT	OXYGEN	1/2~8	CGA-540 Handtight Nut and Nipple
VMR-3-8L-870	OXYGEN	1/2~8	CGA-870 Yoke
VMR-3-15L-992	OXYGEN	1~15	CGA-992 Nut and Nipple
VMR-3-15L-992HT	OXYGEN	1~15	CGA-992 Bull Nose and Handtight
VMR-3-15L-540	OXYGEN	1~15	CGA-540 Nut and Nipple
VMR-3-15L-540HT	OXYGEN	1~15	CGA-540 Handtight Nut and Nipple
VMR-3-15L-870	OXYGEN	1~15	CGA-870 Yoke
VMR-3-15L-346	MEDICAL AIR	1~15	CGA-346 Nut and Nipple
VMR-3-15L-346HT	MEDICAL AIR	1~15	CGA-346 Handtight Nut and Nipple
VMR-3-15L-950	MEDICAL AIR	1~15	CGA-950 Yoke
VMR-3-15L-320	CO2	1/2~15	CGA-320 Nut and Nipple
VMR-3-15L-320HT	CO2	1/2~15	CGA-320 Handtight Nut and Nipple
VMR-3-15L-940	CO2	1/2~15	CGA-940 Yoke

* Other configuration, consult factory.

VMRA SERIES Click-style medical regulator



- Maximum inlet pressure 3000psi.
- The standard preset outlet pressure is 50psi for stabilizing and accuracy flowing.
- Needle valve design for continuous flow.
- Light-weight aluminum body.
- Piston Type.
- Sintered filter for additional safety and to extend regulator life.
- Overall dimensions: 6 " long×1.5 " OD and 1.5 " diameter gauge.
- International standard Inlet and outlet thread outlet hose barb.

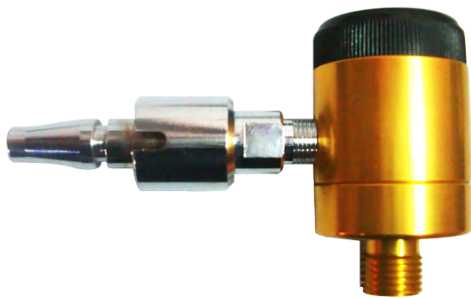
HOW TO ORDER:

Model No.:	Gas	Flow selection (LPM)	Inlet Connection
VMRA-25L-870	oxygen	0,0.5,1,2,3,4,5,6,8,10,15,25	CGA-870(pin index)
VMRA-15L-870	oxygen	0,0.5,1,1.5,2,3,4,5,6,8,10,15	CGA-870(pin index)
VMRA-25L-540	oxygen	0,0.5,1,2,3,4,5,6,8,10,15,25	CGA-540
VMRA-15L-540	oxygen	0,0.5,1,1.5,2,3,4,5,6,8,10,15	CGA-540

Other configuration, consult factory.

VFC SERIES

Click type / Medical flowmeter with quick-connect adaptor



FEATURES:

- Click type(Dial style)/single flowmeter.
- Precision engineered accurately measures from 0~4LPM, 0~8LPM,0~15LPM or 0~25LPM.
- Calibrated at 50psi inlet.
- Optional power take-off units provide 50psi additional outlet pressure.
- USA full lines inlet connections and international standard inlet and outlet thread sizes are available.

HOW TO ORDER:

VFC - OX - 15 - XX - XX

Outlet Connection:

9/16:Male 9/16" M12:Male M12
G3/8:Male G3/8" M16:Male M16
G1/4:Male G1/4" TN:Nipple connection

Inlet connection:

AM:Australian Male	GM:Germany Male
BP:British Probe	JM:Japanese Male
CM:Chemetron Male	M2:1/8"FNPT
DH:Diss Handtight	M4:1/4"FNPT
DM:Diss Male	MM:Medsta Male
DN:Diss Nut and Nipple	XM:Oxequip Male
F2:1/8"FNPT	OM:Ohmeda Male
F4:1/4"FNPT	PM:Puritan Male
FM:French Male	SM:Schrader Male

Click Flowmeter Type:(Liters per minute LPM)

15:15LPM 08:8LPM 03:3LPM 01:1LPM

Gas Type:

OX:Oxygen CO:CO2
AI:Medical Air HE:Helium
N2:N2O

VFC2 SERIES

Click type / Medical double with quick-connect adaptor



FEATURES:

- Click type(Dial style)/double flowmeters.
- Precision engineered accurately measures from 0~4LPM, 0~8LPM,0~15LPM or 0~25LPM.
- Calibrated at 50psi inlet or .
- Optional power take-off units provide 50psi additional outlet pressure.
- USA full lines inlet connections and international standard inlet and outlet thread sizes are available.

HOW TO ORDER:

VFC2 - OX - 15 - XX - XX

Outlet Connection:

9/16:Male 9/16" M12:Male M12
G3/8:Male G3/8" M16:Male M16
G1/4:Male G1/4" TN:Nipple connection

Inlet connection:

AM:Australian Male	GM:Germany Male
BP:British Probe	JM:Japanese Male
CM:Chemetron Male	M2:1/8"FNPT
DH:Diss Handtight	M4:1/4"FNPT
DM:Diss Male	MM:Medsta Male
DN:Diss Nut and Nipple	XM:Oxequip Male
F2:1/8"FNPT	OM:Ohmeda Male
F4:1/4"FNPT	PM:Puritan Male
FM:French Male	SM:Schrader Male

Click Flowmeter Type:(Liters per minute LPM)

15:15LPM 08:8LPM 03:3LPM 01:1LPM

Gas Type:

OX:Oxygen CO:CO2
AI:Medical Air HE:Helium
N2:N2O

TM1 SERIES Tube type / Medical Flowmeters



FEATURES:

- Aluminum body construction for durability.
- Precision engineered pressure compensated design accurately measures flow from 0 to 15 LPM.
- Polycarbonate inner and outer tubes provide greater accuracy, durability & safety.
- Calibrator at 50psi inlet pressure.
- Metal outlet flow control valve vertical (90°) or horizontal (180°) to inlet connection are available.
- International standard inlet and outlet sizes are available.
- Out let 9/16" standard.
- Other configuration, consult factory.

HOW TO ORDER:

Model	Gas	Max.calibrated flow LPM	Inlet Connection
TM1-OX-BS	OXYGEN	0~15	British Probe adaptor
TM1-OX-GS	OXYGEN	0~15	Germany adaptor
TM1-OX-OH	OXYGEN	0~15	Ohmeda adaptor
TM1-OX-00	OXYGEN	0~15	1/8NPT(F)
TM1-AIR-BS	AIR	0~15	British Probe adaptor
TM1-AIR-GS	AIR	0~15	Germany adaptor
TM1-AIR-OH	AIR	0~15	Ohmeda adaptor
TM1-AIR-00	AIR	0~15	1/8NPT(F)
TM1-CO2-BS	Carbon Dioxide	0~15	British Probe adaptor
TM1-CO2-GS	Carbon Dioxide	0~15	Germany adaptor
TM1-CO2-OH	Carbon Dioxide	0~15	Ohmeda adaptor
TM1-CO2-00	Carbon Dioxide	0~15	1/8NPT(F)
TM1-NO2-BS	Nitrous oxide	0~15	British Probe adaptor
TM1-NO2-GS	Nitrous oxide	0~15	Germany adaptor
TM1-NO2-OH	Nitrous oxide	0~15	Ohmeda adaptor
TM1-NO2-00	Nitrous oxide	0~15	1/8NPT(F)
TM1-HE-BS	Helium	0~15	British Probe adaptor
TM1-HE-GS	Helium	0~15	Germany adaptor
TM1-HE-OH	Helium	0~15	Ohmeda adaptor
TM1-HE-00	Helium	0~15	1/8NPT(F)

TM2 SERIES

Tube type/medical duple flowmeters



FEATURES:

- Double flowmeters type.
- Aluminum body construction for durability.
- Precision engineered pressure compensated design accurately measures flow from 0 to 15 LPM.
- Polycarbonate inner and outer tubes provide greater accuracy, durability & safety.
- Calibrator at 50psi inlet pressure.
- Metal outlet flow control valve vertical (90°) or horizontal (180°) to inlet connection are available.
- International standard inlet and outlet sizes are available.
out let 9/16" standard
- Other configuration, consult factory.

HOW TO ORDER:

Model	Gas	Max.calibrated flow LPM	Inlet Connection
TM2-OX-BS	OXYGEN	0~15	British Probe adaptor
TM2-OX-GS	OXYGEN	0~15	Germany adaptor
TM2-OX-OH	OXYGEN	0~15	Ohmeda adaptor
TM2-OX-00	OXYGEN	0~15	1/8NPT(F)
TM2-AIR-BS	AIR	0~15	British Probe adaptor
TM2-AIR-GS	AIR	0~15	Germany adaptor
TM2-AIR-OH	AIR	0~15	Ohmeda adaptor
TM2-AIR-00	AIR	0~15	1/8NPT(F)
TM2-CO2-BS	Carbon Dioxide	0~15	British Probe adaptor
TM2-CO2-GS	Carbon Dioxide	0~15	Germany adaptor
TM2-CO2-OH	Carbon Dioxide	0~15	Ohmeda adaptor
TM2-CO2-00	Carbon Dioxide	0~15	1/8NPT(F)
TM2-NO2-BS	Nitrous oxide	0~15	British Probe adaptor
TM2-NO2-GS	Nitrous oxide	0~15	Germany adaptor
TM2-NO2-OH	Nitrous oxide	0~15	Ohmeda adaptor
TM2-NO2-00	Nitrous oxide	0~15	1/8NPT(F)
TM2-HE-BS	Helium	0~15	British Probe adaptor
TM2-HE-GS	Helium	0~15	Germany adaptor
TM2-HE-OH	Helium	0~15	Ohmeda adaptor
TM2-HE-00	Helium	0~15	1/8NPT(F)

TM3 SERIES Tube type / Medical Flowmeters



FEATURES:

- Zinc alloy body construction for durability.
- Precision engineered pressure compensated design accurately measures flow from 0 to 15 LPM.
- Polycarbonate inner and outer tubes provide greater accuracy, durability & safety.
- Calibrator at 50psi inlet pressure.
- Metal outlet flow control valve vertical (90°) to inlet connection are available.
- International standard inlet and outlet sizes are available.
- Out let 9/16" standard.
- Other configuration, consult factory.

HOW TO ORDER:

Model	Gas	Max.calibrated flow LPM	Inlet Connection
TM3-OX-BS	OXYGEN	0~15	British Probe adaptor
TM3-OX-GS	OXYGEN	0~15	Germany adaptor
TM3-OX-OH	OXYGEN	0~15	Ohmeda adaptor
TM3-OX-00	OXYGEN	0~15	1/8NPT(F)
TM3-AIR-BS	AIR	0~15	British Probe adaptor
TM3-AIR-GS	AIR	0~15	Germany adaptor
TM3-AIR-OH	AIR	0~15	Ohmeda adaptor
TM3-AIR-00	AIR	0~15	1/8NPT(F)
TM3-CO2-BS	Carbon Dioxide	0~15	British Probe adaptor
TM3-CO2-GS	Carbon Dioxide	0~15	Germany adaptor
TM3-CO2-OH	Carbon Dioxide	0~15	Ohmeda adaptor
TM3-CO2-00	Carbon Dioxide	0~15	1/8NPT(F)
TM3-NO2-BS	Nitrous oxide	0~15	British Probe adaptor
TM3-NO2-GS	Nitrous oxide	0~15	Germany adaptor
TM3-NO2-OH	Nitrous oxide	0~15	Ohmeda adaptor
TM3-NO2-00	Nitrous oxide	0~15	1/8NPT(F)
TM3-HE-BS	Helium	0~15	British Probe adaptor
TM3-HE-GS	Helium	0~15	Germany adaptor
TM3-HE-OH	Helium	0~15	Ohmeda adaptor
TM3-HE-00	Helium	0~15	1/8NPT(F)

TM4 SERIES

Tube type / Medical Flowmeters



FEATURES:

- Brass body construction for durability.
- Precision engineered pressure compensated design accurately measures flow from 0 to 15 LPM.
- Polycarbonate inner and outer tubes provide greater accuracy, durability & safety.
- Calibrator at 50psi inlet pressure.
- Metal outlet flow control valve vertical (90°) or horizontal (180°) to inlet connection are available.
- International standard inlet and outlet sizes are available.
- Out let 9/16" standard.
- Other configuration, consult factory.

HOW TO ORDER:

Model	Gas	Max.calibrated flow LPM	Inlet Connection
TM4-OX-BS	OXYGEN	0~15	British Probe adaptor
TM4-OX-GS	OXYGEN	0~15	Germany adaptor
TM4-OX-OH	OXYGEN	0~15	Ohmeda adaptor
TM4-OX-00	OXYGEN	0~15	1/8NPT(F)
TM4-AIR-BS	AIR	0~15	British Probe adaptor
TM4-AIR-GS	AIR	0~15	Germany adaptor
TM4-AIR-OH	AIR	0~15	Ohmeda adaptor
TM4-AIR-00	AIR	0~15	1/8NPT(F)
TM4-CO2-BS	Carbon Dioxide	0~15	British Probe adaptor
TM4-CO2-GS	Carbon Dioxide	0~15	Germany adaptor
TM4-CO2-OH	Carbon Dioxide	0~15	Ohmeda adaptor
TM4-CO2-00	Carbon Dioxide	0~15	1/8NPT(F)
TM4-NO2-BS	Nitrous oxide	0~15	British Probe adaptor
TM4-NO2-GS	Nitrous oxide	0~15	Germany adaptor
TM4-NO2-OH	Nitrous oxide	0~15	Ohmeda adaptor
TM4-NO2-00	Nitrous oxide	0~15	1/8NPT(F)
TM4-HE-BS	Helium	0~15	British Probe adaptor
TM4-HE-GS	Helium	0~15	Germany adaptor
TM4-HE-OH	Helium	0~15	Ohmeda adaptor
TM4-HE-00	Helium	0~15	1/8NPT(F)

TM5 SERIES

Tube type / Medical Flowmeters



FEATURES:

- Aluminum body construction for durability.
- Precision engineered pressure compensated design accurately measures flow from 0 to 15 LPM.
- Polycarbonate inner and outer tubes provide greater accuracy, durability & safety.
- Calibrator at 50psi inlet pressure.
- Metal outlet flow control valve vertical (90°) or horizontal (180°) to inlet connection are available.
- International standard inlet and outlet sizes are available.
- Out let 9/16" standard.
- Other configuration, consult factory.

HOW TO ORDER:

Model	Gas	Max.calibrated flow LPM	Inlet Connection
TM5-OX-BS	OXYGEN	0~15	British Probe adaptor
TM5-OX-GS	OXYGEN	0~15	Germany adaptor
TM5-OX-OH	OXYGEN	0~15	Ohmeda adaptor
TM5-OX-00	OXYGEN	0~15	1/8NPT(F)
TM5-AIR-BS	AIR	0~15	British Probe adaptor
TM5-AIR-GS	AIR	0~15	Germany adaptor
TM5-AIR-OH	AIR	0~15	Ohmeda adaptor
TM5-AIR-00	AIR	0~15	1/8NPT(F)
TM5-CO2-BS	Carbon Dioxide	0~15	British Probe adaptor
TM5-CO2-GS	Carbon Dioxide	0~15	Germany adaptor
TM5-CO2-OH	Carbon Dioxide	0~15	Ohmeda adaptor
TM5-CO2-00	Carbon Dioxide	0~15	1/8NPT(F)
TM5-NO2-BS	Nitrous oxide	0~15	British Probe adaptor
TM5-NO2-GS	Nitrous oxide	0~15	Germany adaptor
TM5-NO2-OH	Nitrous oxide	0~15	Ohmeda adaptor
TM5-NO2-00	Nitrous oxide	0~15	1/8NPT(F)
TM5-HE-BS	Helium	0~15	British Probe adaptor
TM5-HE-GS	Helium	0~15	Germany adaptor
TM5-HE-OH	Helium	0~15	Ohmeda adaptor
TM5-HE-00	Helium	0~15	1/8NPT(F)

TM6 SERIES

Tube type / Medical Flowmeters



FEATURES:

- Aluminum body construction for durability.
- Precision engineered pressure compensated design accurately measures flow from 0 to 15 LPM.
- Polycarbonate inner and outer tubes provide greater accuracy, durability & safety.
- Calibrator at 50psi inlet pressure.
- Metal outlet flow control valve vertical (90°) or horizontal (180°) to inlet connection are available.
- International standard inlet and outlet sizes are available.
- Out let 9/16" standard.
- Other configuration, consult factory.

HOW TO ORDER:

Model	Gas	Max.calibrated flow LPM	Inlet Connection
TM6-OX-BS	OXYGEN	0~15	British Probe adaptor
TM6-OX-GS	OXYGEN	0~15	Germany adaptor
TM6-OX-OH	OXYGEN	0~15	Ohmeda adaptor
TM6-OX-00	OXYGEN	0~15	1/8NPT(F)
TM6-AIR-BS	AIR	0~15	British Probe adaptor
TM6-AIR-GS	AIR	0~15	Germany adaptor
TM6-AIR-OH	AIR	0~15	Ohmeda adaptor
TM6-AIR-00	AIR	0~15	1/8NPT(F)
TM6-CO2-BS	Carbon Dioxide	0~15	British Probe adaptor
TM6-CO2-GS	Carbon Dioxide	0~15	Germany adaptor
TM6-CO2-OH	Carbon Dioxide	0~15	Ohmeda adaptor
TM6-CO2-00	Carbon Dioxide	0~15	1/8NPT(F)
TM6-NO2-BS	Nitrous oxide	0~15	British Probe adaptor
TM6-NO2-GS	Nitrous oxide	0~15	Germany adaptor
TM6-NO2-OH	Nitrous oxide	0~15	Ohmeda adaptor
TM6-NO2-00	Nitrous oxide	0~15	1/8NPT(F)
TM6-HE-BS	Helium	0~15	British Probe adaptor
TM6-HE-GS	Helium	0~15	Germany adaptor
TM6-HE-OH	Helium	0~15	Ohmeda adaptor
TM6-HE-00	Helium	0~15	1/8NPT(F)

VSO SERIES

American & Germany & British Standard Outlets are for use with medical gas systems.



Ohmeda® American medical gas outlets



British medical gas outlets



Germany medical gas outlets

FEATURES:

- Unique pin index for gases to prevent interchanging of gas service
- Color-coded for easy gas identification
- 100% tested and individually packaged

HOW TO ORDER:

	OXYGEN	VACUUM	NITROUS OXIDE	NITROGEN	MEDICAL AIR	CARBON DIOXIDE	WAGD	Outlet description
OHMEDA	VSO-11UO	VSO-11UV	VSO-11E2	VSO-11EN	VSO-11UA	VSO-11EC	VSO-11UW	console outlet 90° 1/2"tubing
	VSO-31UO	VSO-31UV	VSO-31E2	VSO-31EN	VSO-31UA	VSO-31EC	VSO-31UW	ceiling outlet 180° 1/2"tubing
	VSO-61UO	VSO-61UV	VSO-61E2	VSO-61EN	VSO-61UA	VSO-61EC	VSO-61UW	M12 MALE
DISS	VSO-16EO	VSO-16EV	VSO-16E2	VSO-16EN	VSO-16EA	VSO-16EC		console outlet 90° 1/2"tubing
	VSO-66EO	VSO-66EV	VSO-66E2	VSO-66EN	VSO-66EA	VSO-66EC		M12 MALE
BRITISH	VSO-17EO	VSO-17EV	VSO-17E2	VSO-17EN	VSO-17EA	VSO-17EC		console outlet 90° 1/2"tubing
	VSO-67EO	VSO-67EV	VSO-67E2	VSO-67EN	VSO-67EA	VSO-67EC		M12 MALE

Humidifiers

THM-005 HUMIDIFIER

- * Polyethylene container of 200ml capacity.
- * Head in brass chromed plated for durability.
- * 9/16" x 18N Thread. Other thread sizes available.
- * With 3-5psi safety valve.
- * Green color.
- * Reusable



THM-006 HUMIDIFIER









- * Polyethylene container of 200ml capacity.
- * Head in brass chromed plated for durability.
- * 9/16" x 18N Thread. Other thread sizes available.
- * With 3-5psi safety valve.
- * Blue color.
- * Reusable

17

THM-007 HUMIDIFIER

- * Polyethylene container of 150ml capacity.
- * Head in brass chromed plated for durability.
- * 9/16" x 18N Thread. Other thread sizes available.
- * White color.
- * Reusable



Model	Gas	Connections	Model number
 Ohmeda	Oxygen	1/8"NPT Male	2101-OXY-NT2
	Medical Air	1/8"NPT Male	2101-AIR-NT2
	Vacuum	1/8"NPT Male	2101-VAC-NT2
	Nitrous Oxide	1/8"NPT Male	2101-N2O-NT2
	WAGD	1/8"NPT Male	2101-WAG-NT2
	Oxygen	1/4"Hose Barb	2101-OXY-HB4
	Medical Air	1/4"Hose Barb	2101-AIR-HB4
	Vacuum	5/16"Hose Barb	2101-VAC-HB5
	Nitrous Oxide	1/4"Hose Barb	2101-N2O-HB4
	WAGD	5/16"Hose Barb	2101-WAG-HB5
 DISS	Oxygen	1/8"NPT Male	2102-OXY-NT2
	Medical Air	1/8"NPT Male	2102-AIR-NT2
	Vacuum	1/8"NPT Male	2102-VACNT2
	Nitrous Oxide	1/8"NPT Male	2102-N2O-NT2
	WAGD	1/8"NPT Male	2102-WAG-NT2
	Carbon Dioxide	1/8"NPT Male	2102-CO2-NT2
	Nitrogen	1/8"NPT Male	2102-NIT-NT2
	Oxygen	1/4"Hose Barb	2102-OXY-HB4
	Medical Air	1/4"Hose Barb	2102-AIR-HB4
	Vacuum	5/16"Hose Barb	2102-VAC-HB5
	Nitrous Oxide	1/4"Hose Barb	2102-N2O-HB4
	WAGD	5/16"Hose Barb	2102-WAG-HB5
	Carbon Dioxide	1/4"Hose Barb	2102-CO2-HB4
	Nitrogen	1/4"Hose Barb	2102-NIT-HB4
 GS	Oxygen	1/8"NPT Male	2103-OXY-NT2
	Medical Air	1/8"NPT Male	2103-AIR-NT2
	Vacuum	1/8"NPT Male	2103-VAC-NT2
	Nitrous Oxide	1/8"NPT Male	2103-N2O-NT2
	Carbon Dioxide	1/8"NPT Male	2103-CO2-NT2
	Nitrogen	1/8"NPT Male	2103-NIT-NT2
		Oxygen	1/4"Hose Barb
Medical Air		1/4"Hose Barb	2103-AIR-HB4
Vacuum		5/16"Hose Barb	2103-VAC-HB5
Nitrous Oxide		1/4"Hose Barb	2103-N2O-HB4
Carbon Dioxide		5/16"Hose Barb	2103-CO2-HB5
Nitrogen		1/4"Hose Barb	2103-NIT-HB4
 BS		Oxygen	1/8"NPT Male
	Medical Air	1/8"NPT Male	2104-AIR-NT2
	Vacuum	1/8"NPT Male	2104-VAC-NT2
	Nitrous Oxide	1/8"NPT Male	2104-N2O-NT2
		Oxygen	1/4"Hose Barb
Medical Air		1/4"Hose Barb	2104-AIR-HB4
Vacuum		5/16"Hose Barb	2104-VAC-HB5
Nitrous Oxide		1/4"Hose Barb	2104-N2O-HB4

